



C
O
R
P
O
R
A
T
E

e-Business
Network Technology
Information Infrastructure System



Embedded Control System
Internet Based
Enterprise Application

Consulting
Wireless Communication
Remote Monitoring System
Digital Information Display System

Profile 2014

www.smartlab.com

Revision 1.0 8-Jan-14

smartLab®

Confidential Information

Copyright © 2012, Smart Lab Sdn. Bhd. All Rights Reserved. No part of this publication may be reproduced, transmitted, transcribed, stored in a retrieval system, or translated into any language or computer language, in any form or by any means, electronic, mechanical, magnetic, optical, chemical, manual, or otherwise, without the prior written permission of Smart Lab Sdn. Bhd.



Reg. No.60Q13551

TABLE OF CONTENTS

INTRODUCTION.....	3
COMPANY INFO	4
COMPANY INFO	5
BUSINESS SCOPE.....	6
PRODUCTS & SERVICES	7
ENTERPRISE SOFTWARE.....	8
NETWORK SUPPORT OUTSOURCE	9
SECURITY ACCESS SYSTEM.....	10
TEST & MEASUREMENT	11
SUPPORT & SERVICE CENTER	12
SUPPORT & SERVICE CENTER	13
MANAGEMENT TEAM	14
LATTEST TRACK RECORDS	17

INTRODUCTION

Message From Smartlab Chief Executive Officer



Dzulkaflil Jalil ,CEO

Dear all esteem business partners. Without your continuous support, we would not be able to stand as we are today. I, therefore would like to extend my gratitude for your support through out our 16 years of history.

My team and I will always be committed to your business needs in order to ensure success for all. Smart Lab customer policy commitment will ensure our best effort in supporting you whenever needed. We also welcome any comment and suggestion from you in order for us to improve our products and services.

With your cooperation and our commitment, we will make sure a mutual benefit for us and together we create a better technology for the future.

CEO Brief Profile

Dzulkaflil Jalil, CEO of Smart Lab Sdn Bhd

Dzulkaflil Jalil graduated from Purdue University USA in 1993 with BSC Electrical Engineering and earned MSc from USM in 2001 . He is currently is PhD candidate researcher in School of Management Technology UUM . Prior to business involvement, he has worked as design engineer with Siemens AG and Intel Corp . He is the co founder of Smart Lab Sdn Bhd, a company specializing in Enterprise Software and electronics design . During 18 years of operation, Smartlab has successfully diversified its portfolio into semiconductor test and measurement, security access control, and IT banking through subsidiary companies.

Dzulkaflil is the recipient of Gold award of Penang ICT entrepreneur 2003/2004 and The Excellent Entrepreneur award 2009 . He was appointed in the judge panel for 2005 Penang State Entrepreneur award and was conferred PJM medal in 2011. He is the cofounder and currently the president of Penang IT entrepreneur Association and also the chairman of Management Committee of Sunny Point Complex.

smartLab™
Integrating The Enterprise

COMPANY INFO

Founded in Jan 1996

Company Share holding:
100 % Bumiputera

Authorized Capital:
RM 1000,000.00

Paid Up Capital:
RM 1000,000.00



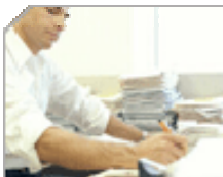
VISION

To be a world's renowned organization in Internet products and services with creative innovation and reputation in high quality commitment.



MISSION

To produce revolutionary Internet solution products and services with unparalleled commitment in continuous development and customer satisfaction.



SMART LAB GROUP OF COMPANIES

Testlogics Sdn Bhd
Test and Measurement Company



DisplayWork Sdn Bhd
LED Display and Lighting Solution



Secure Logics Solution
Security Products Solutions



Chulia Smartlab Sdn Bhd
Facility Management and
Building automation



COMPANY INFO

Name	SMART LAB SDN. BHD. (Co. No: 372459-K)
Business Address	8-04-09, SUNNY POINT COMPLEX, JALAN SULTAN AZLAN SHAH, 11700 BATU UBAN PENANG
Telephone No.	(04) 659 6700
Facsimiles No.	(04) 659 6733
Website	http://www.smartlab.com
E – Mail	info@smartlab.com
Kuala Lumpur Address	E-13A-11, PLAZA MON'T KIARA, MON'T KIARA 50480 KUALA LUMPUR
Telephone No.	(03) 620 18266
Facsimiles No.	(03) 620 18267
Date Incorporated	JANUARY 3, 1996
Issued & Paid Up Capital	RM 1,000,000.00
Authorized Capital	RM 5,000,000.00
Board of Directors	DZULKAFLI ABDUL JALIL (EXECUTIVE CHAIRMAN) RADZALI SAAD (EXECUTIVE DIRECTOR)
Share Holding	DZULKAFLI ABD. JALIL - 85%
	RADZALI MD. SAAD - 15%
Company Secretary	WMM Corporate Consultancy Sdn Bhd No 22 First Floor Jalan Putra 05100 Alor Star Kedah.
Auditors & Tax Consultants	Azman Ahmad & Co 03-17B 3rd Floor Kompleks PKNS, 40000 Shah Alam, Selangor
Bankers	HSBC Bank BERHAD
	CIMB Bank (M) BERHAD
Kementerian Kewangan Malaysia	REGISTRATION NO: 357 042550 040100, 100101, 100200, 180100, 180300, 210101, 210102, 210103, 210104, 210105, 210106, 220109, 220704
Tenaga Nasional	REGISTRATION NO: V 004450 040100, 100101, 100200, 180100, 180300, 210101, 210102, 210103, 210104, 210105, 210106, 220109, 220704

BUSINESS SCOPE

SMARTLAB SDN BHD, offers a comprehensive range of software and hardware solutions which includes providing internet applications and internet infrastructure services.

Founded in 1996, it now has more than 50 workforce through out Malaysia.

smartLab™
Integrating The Enterprise

Prospects for growth and the ability to remain the partner of choice to its customers in its niche are in no small measure due to its strong foundation. SMARTLAB is well poised to become one of the major players in the country's ever expanding e-business industry.

SMARTLAB product and services

- Enterprise Suites – ERP
- Workplace Enterprise Platform -
- Access Control system
- SCADA solutions
- Test and Instrumentation.
- Outsource System /Network Support



OUR TEAM

Smart Lab management is always striving for creating maximum efficiency in our management practice.

We thus have adopted TQM continuous improvement methodology as our guide for achieving our goals.

With our TQM program, all of our staffs are required to participate in company review meeting. From time to time, we organize off site review meeting for all employees.

Part of Smart Lab Strategies is management commitment to our staff development program. In Smart Lab we believe our staff, with their experience and capabilities as our most valuable asset. Our staffs are encouraged to enroll in internal and external training program. Among our staff training policies provides option for staff to receive full support for external certification fees and also full reimbursement of course fees.

PRODUCTS & SERVICES

Enterprise Suite

– Internet based ERP

- CRM - Customer Relationship Management, Help Desk.
- Supply Chain Management - Inventory, Distribution, Procurement.
- Financials - Financial and management Accounting.
- Human Resource Management System.
- Back Office - Document Control, IT / MIS, Email.
- Industry Solutions - Manufacturing, Zakat System, Property Management, Trading Distribution, Collection Customer Portal.



With the evolution and increasing interrelation between ERP, MRP and Industrial Specific Management tools, Smartlab was challenged to embark on an aggressive project to re-develop and redesign the overall Enterprise Business Suite structure in order to include more functions and intelligence, required by today's business leaders.

This finally led to the development of the Enterprise Suite for Workplace. Having the advantage to redesign the platform on a clean sheet of paper, Smartlab was able to include many new design concepts from ground up, which others can only achieve through "system-patch" concept.

Enterprise Suite for Workplace is more than just a Business Suite portal, in fact it is a complete set of business applications that enables your business to efficiently manage customer interactions, services, manufacture products, ship orders, collect payments and more – all this from a enterprise suite with each module independently scalable, with its own portal and yet easily integratable with other modules in a user friendly Workplace portal environment.

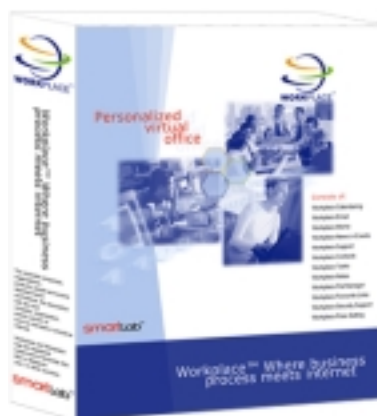
ENTERPRISE SOFTWARE

Workplace – Enterprise Portal

- Email, Web hosting , Forum, bulletin board, scheduling system
- Web application development platform
- Portal and application integrator
- Security and firewall solution



Workplace is an operating system designed to become a host or interfaced shell for ERP modules. It provides secured borderless centralized access to the available system applications and resources within an organization.



The Workplace Module is more than a portal. By logging in through the Web to their respective accounts from any PC (home, office or any site), employees get their personalized window setup, with all their information, filing systems, configuration and links accessible instantly.

Thus this promotes the “Office Anywhere” concept, without having to carry your personalized lap-top or desk top computer.

NETWORK SUPPORT OUTSOURCE

IT System / Network Integration and Support

- Network and System Support
- Storage Area Network Solution
- IT support Outsourcing
- Database maintenance
- System Audit



Network Division

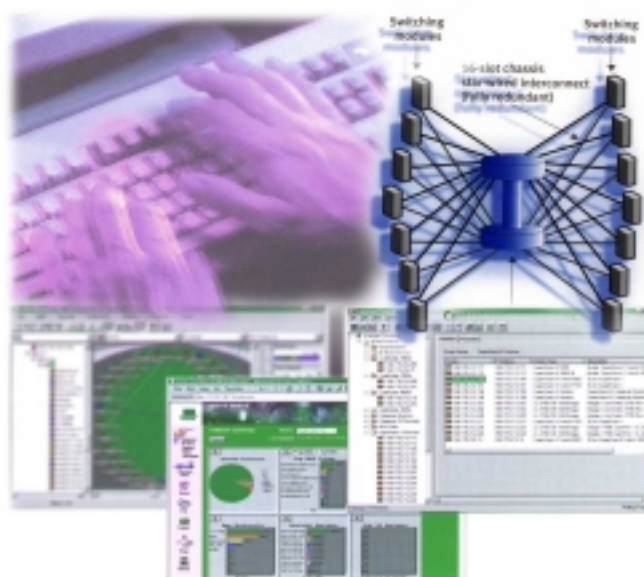
Smart Lab network division scope comprises of providing our customer the consultation, design, implementation, managing and maintaining data and voice network infrastructure for small and large scale LAN and WAN.

Smart Lab network division offers the latest technology in building our customer data and voice network infrastructure. Our teams comprises of engineers that are experience in designing, installing, managing and maintaining intelligent network infrastructure solution for a high rise building and wide area network connectivity. Video conferencing, remote access and video on demand integration are part of services offered by this division.

Our previous successes are reflected in true professionalism in handling project management methodology. Smart Lab staffs are trained in strict adhering to our project management cycle and full commitment in documentation. We are lead partners to various major brand names in computer network industry such as 3Com, Cisco and Intel in implementing various large network projects.

Smart Lab engineers have been participating actively in Malaysian Government Multimedia Super Corridor project to various organizations and companies. Smart Lab also has been teaming up with foreign IT companies in various tender.

Another main product of this division is support and maintenance services. It offers IT outsourcing for companies or organizations that do not want to absorb high cost of IT maintenance and chose to outsource IT support. Our service will reduce total cost of ownership of the whole



SECURITY ACCESS SYSTEM **SECURE LOGICS**

Integrated Security Management. Access Control
CCTV and Time Management

- Time Attendance and Security Access Control system
- Java Embedded Controllers.
- Internet Based Semiconductor Tester for manufacturing.
- Computer Integrated Manufacturing Solution.
- Internet based Display Solution
- Internet CCTV and Security Solution



Our teams of engineers are experienced in handling high performance servers running business critical application such as ERP and MRP in various organization including manufacturing, port, security and banking sector. Our solution incorporates all kind of high availability, fault tolerance, and adaptive load balancing most recent technology.



TEST & MEASUREMENT

TEST LOGICS™
THE ART OF TEST SOLUTIONS

DT – 630 SERIES

The Art Of Test Solutions

Multi Channel Stackable IC Test System

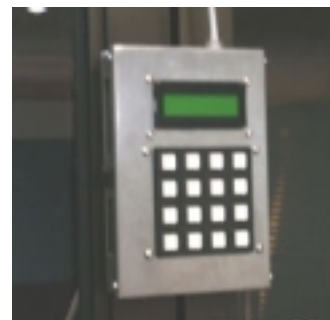
Individual on-board Microprocessor for accurate and fast processing

512 Channel Multi Voltage-Current Sourcing Dual independent High Precision Source and Measurement unit

High flexibility via Multi-layer MUX connection for each channel



JAVA Embedded Network Controller series are small but mighty Application Ready Platforms for your networked Applications. Without hard disk and fan, our Data Acquisition and Control modules meets the industrial most robust environmental conditions, while leveraging on its embedded JVM (Java Virtual Machine) and standard JAVA language programming support through "Slush", a UNIX like command shell interface. Slush, while supporting multi-threaded and multi-user environments, also provides conveniences such as network accessibilities such as Telnet and FTP via Ethernet (RJ-45) TCP/IP.



Test and measurement division serves customer requirement in semiconductor testing industry as well as general automation support . Smartlab has always maintained the capability in both software and hardware design and programming. This division has a completed more than 500 projects from various industry such as semiconductor manufacturing , oil and gas, test and instrumentation etc.

Mobile Platform -
Androids

- ☐ Java on eclipse

Ms Windows Platform

- ☐ VB.Net C#
- ☐ ASP / ASP. NET

☐ MicroController/
Embedded

- ☐ C / C++
- ☐ MCS asm

Web Client Platform

- ☐ HTML / XML
- ☐ J Script / J query
- ☐ Active X

☐ Web Server
Platform

- ☐ ASP / ASP. Net
- ☐ PHP / AJAX

☐ Linux Kernel /
Embedded

- ☐ C / C++
- ☐ Unix Shell

SUPPORT & SERVICE CENTER

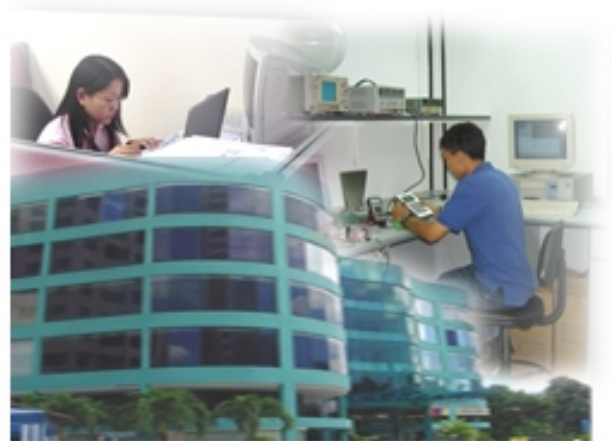
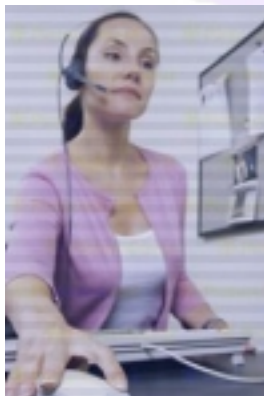
Smart Lab 's main commitment has always been providing the best before and after sales support and services. As for today Smart Lab support and service center is covering West Malaysia through its three main centers- KL, Penang ,Ipoh and Kedah.

Penang Branch

Penang office has been in operation since 1996. Located in Batu Uban Penang, the branch operates as Technical Support center, sales and

Ipoh Branch

Ipoh Branch has been operating since year 2000



Kedah Branch

Kedah marketing and service center has been setup since 1997.

Kuala Lumpur Branch

Kuala Lumpur Support outlet is now located in Plaza Mont' Kiara .The outlet is run by the KL Branch Manager and technical support staffs.

SUPPORT & SERVICE CENTER

Present Market

Smart Lab present market inclusive of, government sectors, Multinational Corporation, institution of higher learning and SMI companies.

- Multinational Corporation
- Government Sectors
- Educational Institution
- SMI companies



Business Alliances

Smart Lab believes in partnerships or joint ventures in order to provide total solution. For this reason Smart Lab has created memorandum of agreement with various foreign companies with mutual benefits. For:

Video On Demand Solution:
TNCi Inc, Atlanta USA.

ATM network solution:
ATM link Inc., CA, USA

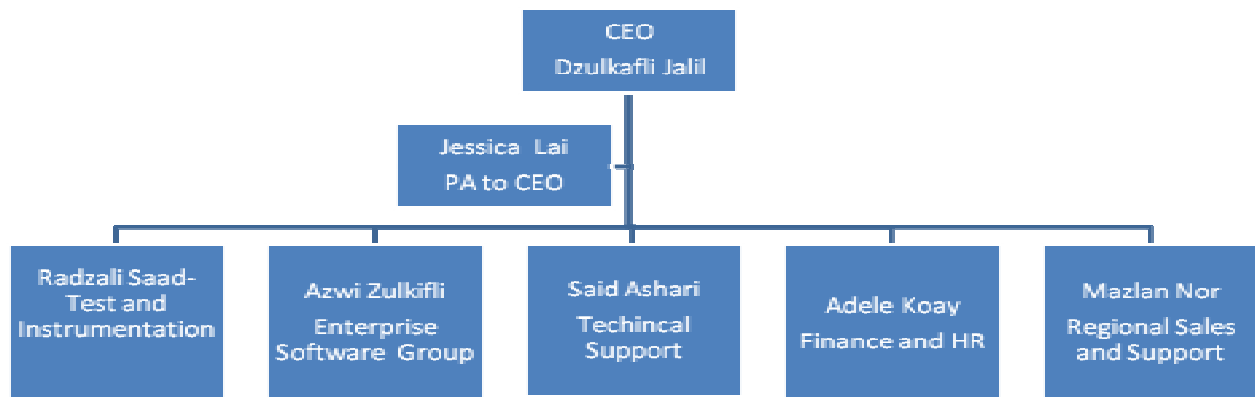
System Integration:
Perot System Inc, Atlanta USA

Interactive TV:
Accorn Media, Cambridge, UK

Existing Customers

The following is a list of our existing customers:

- Sony Electronics (M) Sdn Bhd
- Siemens Semiconductors Sdn Bhd
- Intel Technology Sdn Bhd
- Hitachi Semiconductors Sdn Bhd
- Dynamics Precision Sdn Bhd
- Pernec Bhd
- Pusat Urus Zakat Pulau Pinang
- Telekom Malaysia Bhd
- University Telekom Malaysia
- University Utara Malaysia
- University Sains Malaysia
- Universiti Teknologi Mara
- Koperasi Polis Malaysia Berhad
- Patimas Berhad
- Pernec Advance Network Sdn Bhd
- Ministry of Education Malaysia
- Penang Port Sdn Bhd
- Pusat Zakat Selangor
- Tenaga Cable Industries Sdn Bhd
- Euro Medical Sdn Bhd
- Guthrie Technology Sdn Bhd
- GITN Sdn Bhd
- Unisem Berhad
- Agilent Technology Sdn Bhd
- Dynacraft Sdn Bhd.
- Jabil Circuit Sdn Bhd
- Micromodular Sdn Bhd.
- First Solar SdnBhd
- PSC Naval Dockyard
- SR Technolgy Sdn Bhd
- Intramas Sdn Bhd
- Carsem Semiconductor Sdn Bhd
- Unisem (M) Sdn Bhd



MANAGEMENT TEAM

	NAME: DZULKAFLI BIN ABD. JALIL
	POSITION: CEO
	QUALIFICATION: B.Sc. Electrical Eng. / Computer Engineering (PURDUE, USA) M.Sc. Computer Science
EXPERTISE	Network and Server architecture, Controller Firmware development and interfacing systems design. Display technology application solution. Component Electrical, Optical, thermal characterization and burn in system Network solution design, MCS51, 96 micro-controller application design, Web design, Java, CGI, ASP, C++ and X86 assembly programming.
EXPERIENCE	Design Engineer Siemens Semiconductors (1993 to 1995) Intelligent Display product design and development. Bench Engineering tester architecture design. Electrical, Optical, thermal Characterization laboratory setup. Test Development Engineer - Enterprise Server .Intel Corporation Hillsboro. OR . USA. (1996 to 1999) Test Software Architecture Developer (Server Management) Technology Architecture development group.

	NAME: RADZALI BIN MD. SAAD
	POSITION: Electronics Design Consultant & Director
	QUALIFICATION: Dip. Electrical Eng. (ITM) 1978
EXPERTISE	Circuit designs, Character recognition system design and development, Semiconductor testing, sensor and display system design, C++ and assembly programmer.
EXPERIENCE	Staff Engineer Test Development and Manufacturing group. Siemens Semiconductors (since 1981 - 2004)

	NAME: ADELE KOAY GUAT TENG
	POSITION: HR and Finance Manager
	EXPERTISE: BSc Accounting. UK 1999
EXPERIENCE	15 year experience in corporate HR and finance

	NAME: AMALLUDIN YAHYA
	POSITION: Technical Director
	Dip. Computer Science . UITM , 1988
EXPERTISE	Storage Area Network consultation, design and implementation Data Recovery Solution. Solaris, Informix, SCO Unix
EXPERIENCE	EMC Corporation. Outsourced Sr. System Engineer (1999-2004): DELL Corporation ABS – System Engineer - Sun Microsystem

	NAME: JAMES CHOW KHIN HOONG
	POSITION: Operation Engineering Manager
	QUALIFICATION: MBA in Technology Management – 1997 B. Eng Electrical & Electronic Engineering – 1990
EXPERTISE	Manufacturing Process Control Electrical & Electronic Research & Development, Product Development & Market Introduction, Equipment & Automation Design, IC Design, Project Management

EXPERIENCE	<p>Business Unit Manager: Agilent Technology, 1999 – 2001 Business Unit Manager: Hewlett Packard, 1993 – 1999 Manufacturing Engineer: Automotive Assembler, 1992 – 1993 Design Engineer: Ford Motor Company, 1990 – 1991</p>
------------	--

	NAME: MAZLAN NOOR
	POSITION: Regional Sale and Support
	<p>QUALIFICATION: BSc Electrical Engineering 1992 (Purdue University, USA), MSc Computer Science, 1994 (Purdue University , USA)</p>
EXPERTISE	Enterprise System Development . MS Access, SQL, Unix, ASP, Pascal, ASP, OOP, Visual C++, Visual Basic, Open GL, JAVA, C Language.
EXPERIENCE	Senior System Analyst , software developer , Indiana University , Integrated engineering Labs , 1993 - 2003

LATEST TRACK RECORDS

Computer and Network System Integration

Supply, install, test, commission and maintenance of the computer system for the cargo and marine application system.

Smart Lab is responsible for the design, installation and maintenance of LAN and WAN system and all hardware related system. The system consists of 2 Units of Sun Microsystems E40 redundant server running customize port application. The whole LAN and WAN network uses Cisco system which fully manageable form remote site.

Client: Penang Port Sdn Bhd

Design, supply, install, test and maintenance of Tenaga Cable Industry Sdn Bhd Bangi Plant network and Security Access infrastructure.

The project features the design and install of a fully manageable network. The main computer room is connected to 7 network subnets at different locations.

Client: Tenaga Cable Industry Sdn Bhd

Supply, install, test and maintain system and network infrastructure for Pusat Urus Zakat Selangor.

The project consists of LAN and WAN infrastructure. Pusat Urus Zakat's WAN connects 20 remote locations within the state for running collection application. We also supply Sun Enterprise Ultra 10s, 2 units of HP servers and 10 units of Compaq PCs.

Client: Pusat Urus Zakat Selangor

Supply of computer systems and accessories to Tenaga Cable Industry Sdn Bhd Bangi. This project includes the supply of 65 units of workstations and printers

Client: Tenaga Cable Industry Sdn Bhd

Supply, install, test, commission and maintenance of Pusat Sumber system network for Bahagian Teknologi Pendidikan, Kementerian Pendidikan Malaysia.

Client: Kementerian Pendidikan Malaysia, Bukit Kiara

Supply, delivery and install computer system and network cabling for Penang Port Sdn. Bhd.

Client: Penang Port Sdn. Bhd.

Supply, delivery and install SUN Workstation Ultra 60 at Pusat Pengajian Sains Fizik, University Sains Malaysia

Client: University Sains Malaysia

The Supply of Optical Fibre Cable Accessories and Engineering Services of Optical Fibre Cable and Optical Fibre Accessories

Client: FIBRE COMMUNICATION (M) SDN BHD

Supply of Optical Fibre Cable System for Access Network and The Provision of Engineering Services

Client: APEX COMMUNICATION & MANAGEMENT SERVICES SDN BHD

Installation of Infrastructure and Optical Fiber Cable using blowing technique along the Penang Bridge concession area for Telekom Malaysia Berhad.

Client: TELEKOM MALAYSIA BHD

Installation and Supply of BTS and Microwave Transmission Engineering Services for Northern Region

Client: TELEKOM CELULLAR SDN BHD

Supply, delivery and install computer system and network cabling for Penang Port Sdn Bhd

Client: Penang Port Sdn Bhd

Supply, delivery and install computer system and network cabling for Penang Port Sdn Bhd

Client: Penang Port Sdn Bhd

Enterprise Software Development Projects

Development of Collection Modules over the Internet for Pusat Urus Zakat Selangor.

Client: Pusat Zakat Selangor

Supply of JKH Project Management System for Telekom Malaysia Harta Usahawan Sdn Bhd.

Client: Harta Usahawan Sdn Bhd

Sistem Kutipan – Sistem Maklumat Zakat - Pusat Zakat Selangor

Client: Pusat Zakat Selangor

Telekom Celular Wireless network installation and support.

Client: Tmtouch – Telekom Celular

Sistem Potongan Gaji – Customer Portal - Pusat Zakat Selangor.

Client: Pusat Zakat Selangor

Workplace Enterprise Portal - Enterprise Manufacturing Solution.

Client: Delphic Manufacturing Solution

Sistem Kutipan / Agihan Zakat / Kakitangan - Sistem Maklumat Zakat – Jabatan Zakat Negeri Kedah – Kerjasama Asahabah Urus Zakat.

Client: Jabatan Zakat Negeri Kedah

Sistem Potongan Gaji – Customer Portal - Pusat Zakat Selangor.

Client: Pusat Zakat Selangor

Workplace Enterprise Portal – Manufacturing System.

Client: Micromodular System Sdn Bhd

Sistem Agihan Zakat - Sistem Maklumat Zakat – Pusat Zakat Selangor.

Client: Pusat Zakat Selangor

Sistem Potongan Gaji – Customer Portal - Pusat Zakat Selangor.

Client: Pusat Zakat Selangor

Workplace Portal & Hosting Services for Micro Modular System Sdn Bhd.

Client: Micro Modular System Sdn Bhd

Project Account Management System (PAMS) for MMS.

Client: Micro Modular System Sdn Bhd

Workplace Enterprise Edition Server Platform Infrastructure and Workplace Application Software.

Client: Kerajaan

Workplace SB Edition Server Platform Infrastructure and Workplace Application Server Software for Pusat Urus Zakat Penang.

Client: Pusat Urus Zakat Penang

Wireless Network and Access Control for PusatKomputer Negeri Pulau Pinang

Client: Penang State Government

Ship to Shore Military Communication and security Network System.

Client: PSC Naval Dockyard – Royal Malaysian Navy

HRMS E- Suites for workplace – Leave application, Attendance, Payroll , Recruitment and Appraisal.

Client: Kerajaan Malaysia

HRMS System with Access Control and TMS for Pusat Zakat Selangor.

Client: Pusat Zakat Selangor

Time Management , Security Access and CCTV system – Dynacraft Industry Sdn Bhd .

Client: Dynacraft Industry Sdn Bhd

Human Resource Management System- Time Management with Integrated Retractable barrier for Dynacraft Industry Sdn Bhd.

Client: Dynacraft Industry Sdn Bhd

Reseller Portal with quotation online for Fibrail - VADS Berhad.

Client: VADS Berhad

Collimated LED light source tester with Calibration Management System.

Client: Agilent, Inc

Asset Management System

Client: MMEA –Malaysia Maritime Enforcement Agency

Sun Clock System – Internet / GPS based display Solution with RemoteInternet Software Control.

Client: Equine Park Sdn Bhd

Ferry Pedestrian Management Controller System.
Access Control with Turnstile Barrier and CCTV network

Client: Penang Port Sdn Bhd

Web Portal system with database

Client: Fisheries Research Institute

New Generation Multi Channel FA tester

Client: Intel Corporation.

Gold saving Account branch and HQ system for Bank Kerjasama Rakyat Bhd

Client: QEGold Sdn Bhd (Bank Rakyat)

High Density Parametric Tester . Design and Supply . 512 channels stackable test and measurement unit for high density pin count semiconductor products. 2 high current Source and measure unit. Real time curve tracer functions.

Client: Intel Corporation

Procurement and Project account management with financials.

Client: Fiberail Sdn Bhd

Procurement and Vote system

Client: Jabatan Zakat Negeri Kedah

Intergrated Security Management with Access Control, TMS, and CCTV

Client: Carsem Semiconductors Bhd MPI Group

Integrated Security Management with Access control and CCTV

Client: Hospital Seberang Jaya

Point of Sales with Online Integrated Warehouse, financials, procurement and CCTV. 8 branches.

Client: Pusat Urus Zakat, Pulau Pinang

Semiconductors test with binning system

Client: CREE corporation USA.

Time Management System with HRMS

Client: Majlis Perbandaran Pulau Pinang

Networking System and cabling projects.

Client: Kolej Matrikulasi Arau, Kementerian Pendidikan Malaysia.

Tender of Design , supply and install of Data Center , Security management and networking system

Client: SEMEO Recsam Penang, Kementrian Pendiddikan Malaysia

Programmable Power Supply with 6 Channel high Current for New PC architecture.

Client: Intel Corporation.

Security management with CCTV and Marina Management

Client: Penang Port Sdn Bhd

Networking System and cabling projects.

Client: Kolej Matrikulasi Arau, Kementerian Pendidikan Malaysia.

Integrated Digital Display System. Multi branches internet control display.

Client: Universiti Sains Malaysia

Flying ICT Probe for PC motherboard and PCB tester. Vision guided system with servo control.

Client: Intel Corporation.

Toll Fare Indicator System for Butterworth Outer Ring road

Client: Intramas Sdn Bhd.

Face Recognition Access System for Incubator Lab

Client: Virtual Prima Network / Penang Development Corporation.

Time Management System

Client: Unisem (M) Berhad

Mifare Door Access System with Enterprise Security Management System

Client: Universiti Sains Malaysia (USM)

Mifare Time Attendance System with Enterprise Security Management System

Client: Universiti Sains Malaysia (USM)

Time Attendance Management System with Enterprise Security Management System for Carsem Production Floor

Client: Carsem (M) Berhad (S-Site)

Security Surveillance Camera System & Fingerprint Door Access System

Client: Penang Port Sdn Bhd (NBCT)

UTP Category6 Structured Cabling System with 3COM Network Equipments for Pejabat Daerah & Tanah Pulau Pinang

Client: Pusat Teknologi Maklumat & Komunikasi Negeri (PSUK)

Mifare Door Access System with Enterprise Security Management System

Client: Universiti Sains Malaysia (USM Library)

Supply, Delivery, Install & Commission 29 units of Desktop Computer HP DC7900

Client: Universiti Sains Malaysia (USM Pusat Bahasa)

UTP Category6 Structured Cabling System with 3COM Network Equipments for Pejabat Warisan Dunia (World Heritage Office) Pulau Pinang

Client: Pusat Teknologi Maklumat & Komunikasi Negeri (PSUK)

Intel TL-021024B Multi Channel Tester c/w 1024 Channels, 2 SMU with 4 voltage ranges, 5 current ranges, 32 Output digital buffered channels, 1024 VI course channels 50mA/Ch, programmable voltage

Client: Intel Technology Sdn Bhd

Navy Patrol Vessel PV3, PV4, PV5 & PV6 Ship to Shore Communication Link system , from PV Ship to RMN Jetty Lumut, from PV Ship to RMN Jetty Sepanggar, from PV Ship to RMN Jetty Kuantan.

Client: Boustead Naval Dockyard – Lumut for Royal Malaysian Army

Manufacturing ESD Testing system

Client: Jabil Circuit

Facility Management with building automation

Client: Finisar Ipoh, - Chuliafm Sdn Bhd



APPENDIX

Zoom out (Ctrl+Minus)



GlobalGROUP

local assessment, global certification

Certificate of Registration

This is to certify that the

QUALITY MANAGEMENT SYSTEM

of

SMART LAB SDN BHD

8-04-09 Sunny Point, Batu Uban, Pulau Pinang, 11700, MALAYSIA

for


Design, development, production and deployment of enterprise products and solutions

has been assessed and registered against the provisions of

ISO 9001:2008

International Standard

With

Registration Number:	60Q13551	Project:	85-13551-1-Q
Certification Date:	6 March 2012	NACE:	K 72.60
Recertification Due Date:	29 February 2015	Exclusions:	None
Certification Approved By:		Alan Cherry	

Group Chief Executive Officer

Registration is subject to the management system being continually maintained to the above standard under regular surveillance.
Should surveillance not take place when required, registration shall be removed.

This certificate is the property of Global Certification Limited, Concorde House, Trinity Park, Birmingham, B37 7UQ, England, United Kingdom



Please validate the authenticity and status of this certificate at www.globalgroup.net



20006116